

 3  2  1



Newark Road, *Windlesham*

OSBORNE HEATH

A three bedroom, two reception, end of terrace home with a garage and parking offered to the market with no onward chain.

The ground floor has a modern kitchen, lounge with a log burning stove, dining/family room with doors leading out to the garden, and a downstairs WC.

On the first floor is the principal bedroom with built-in wardrobes, two further bedrooms and a modern family bathroom.

Outside the property has a garage in the near by block, parking, plus front and rear garden with side access.

Newark Road is a cul-de-sac in Windlesham village. The local area has private and state schools including Gordon's, Hall Grove, Hurst Lodge, The Marist, St. George's, St. Mary's, Sunningdale, Valley End, Windlesham Village and Woodcote House. Local places of interest include Ascot Racecourse, Coworth Park, Guards Polo Club, The Lexicon, Queenwood, Sunningdale Golf Club, Wentworth Club, Windsor Great Park and Windsor Castle. The nearest train stations are Bagshot and Sunningdale where trains run to London Waterloo, Guildford and Reading. Windlesham is also convenient for the M3, M4, M25 and Heathrow Airport.

EPC rating C. Council Tax band D.





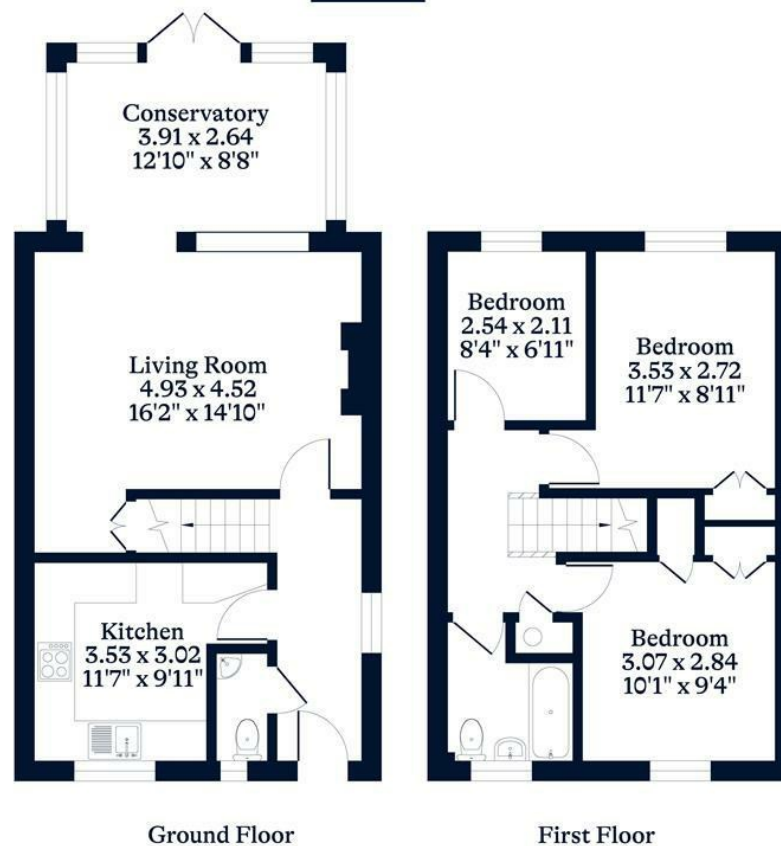
APPROXIMATE FLOOR AREA

House - 86.50 sq m - 932 sq ft
(Gross Internal Area)

O
|
H

NOT TO SCALE

This plan is for illustration purposes only



This plan is for layout guidance only. Not drawn to scale unless stated. Windows and door openings are approximate. Whilst every care is taken in the preparation of this plan, please check all dimensions, shapes and compass bearings before making any decisions reliant upon them.

OSBORNEHEATH.CO.UK